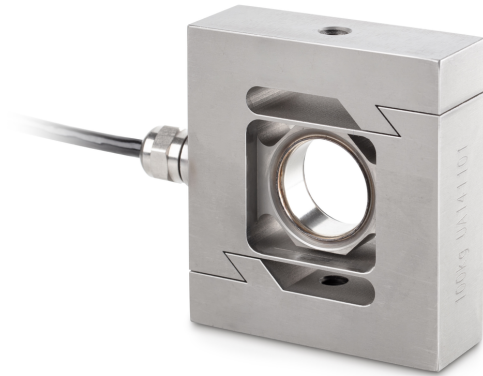


KERN CS 250-3P2

KERN

"S"-Load/force measuring cell made from stainless steel



Construction

Design	"S" shaped cell
Dimension (W×D×H)	92×86×50 mm
Material	stainless steel
Cable length	6 m
Mounting - force application	Threaded hole M12
Mounting - force dissipation	Threaded hole M12

Functions

IP protection - complete device	IP68
---------------------------------	------

Environmental conditions

Use temperature [Min]	-10 °C
Use temperature [Max]	40 °C
Ambient temperature [Min]	-35 °C
Ambient temperature [Max]	65 °C
Storage temperature [Min]	-40 °C
Storage temperature [Max]	70 °C

Packing & Shipping

Readability force [d] (N)	1 d
Dimensions packaging (W×D×H)	200×180×55 mm
Net weight	0,96 kg
Shipping method	Parcel service
Net weight approx.	1,00 kg
Gross weight approx.	1,2 kg
Shipping weight	1,072 kg

Services (optional)

Article number for DAkkS calibration (tensile force)	963-163V
Article number for DAkkS calibration (compressive force)	963-263V
Article number for DAkkS calibration (tensile force/ compressive force)	963-363V

Category

Brand	Sauter
Product category	Measuring cell
Product group	Load/force measuring cell
Product family	CS P2

Measuring System

Weighing capacity [Max]	250 kg
Load cell connection	4-wire
Load cell OIML class	C3
Load cell - Resolution (verifiable)	3000 e
Load cell - characteristic value - nominal	2 mV/V
Load cell - Y-value	12000
Load cell - Combined error	0,023%
Load cell - Dead load [Min] (%)	0%
Measuring applications	force mass
Load cell - Input resistance - nominal	350 Ω
Load cell - Output resistance - nominal	355 Ω
Load cell - Isolation resistance - [Min]	5000 MΩ
Measuring range force [Max] (N)	2,5 kN
Directions of force	tension compression

Approval

CE mark	✓
---------	---

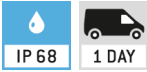
KERN CS 250-3P2



"S"-Load/force measuring cell made from stainless steel

Pictograms

STANDARD



OPTION

